

AD963DB9 Assembly Guide

Before Assembling:

1. Please check the accessory list before assembly. Contact your local dealer if you find any parts missing.
2. Please read through the assembly guide.

組裝套件

(1)M2x3 Screw *5pcs
P/N: 13MISW00005M11



[for Full size SSD]

(2)M2x6mm(H) Screw *5pcs
P/N: 13MISW00001M11



[for Half size SSD]

(3)Copper Nut /H: 4.0mm *5pcs
P/N: 13MICA00001M05



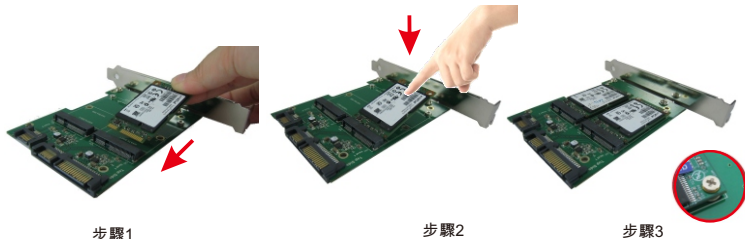
[for Half size SSD]

(4)M2screw *5pcs
P/N: 13MINU00001M11



[for Half size SSD]

The above accessories parts are all have extra 1pc for spare part.



步驟1

步驟2

步驟3

- Step 1. insert mSATA SSD into mSATA (mini PCI-e) socket.
- Step 2. press mSATA SSD down and aim to the copper nuts below.
- Step 3. fix mSATA SSD on the adapter with 2pcs of M2*3 screws.

-----Two mSATA SSD are using the same installation -----

(If your mSATA SSD is half size form factor, pls use extra 2pcs of copper nuts as stand like mounted ones.)